

# Eco-friendly Chrome Tanning of Leather using Ultrasound Technique

by

Md. Abu Sayid Mia,<sup>1,2</sup> Shamima Yeasmin,<sup>1</sup> Mohammad Nurnabi<sup>1</sup> and Md. Zahangir Alam<sup>1,3\*</sup>

<sup>1</sup>*Department of Applied Chemistry and Chemical Engineering, University of Dhaka,*

Dhaka 1000, Bangladesh

<sup>2</sup>*Centre for Advanced Research in Sciences (CARS), University of Dhaka,*

Dhaka 1000, Bangladesh

<sup>3</sup>*Atish Dipankar University of Science & Technology,*

Dhaka 1230, Bangladesh

## Abstract

This article describes the development of an environmentally friendly chrome tanning process of leather using ultrasound. Most of the leathers are tanned by the conventional method using basic chromium sulfate. It is one of the most polluting and time-consuming steps in leather processing. Investigations were carried out on ultrasound assisted eco-friendly tanning process so that the chrome tanning agent could provide better quality leather. Effects of using ultrasound in chrome tanning process were studied at different pH, tanning time, tanning agent dosage, and then compared with that of conventional method. Tanned leathers were characterized by scanning electron microscopy (SEM), photomicrographic analysis, thermogravimetric analysis (TGA), differential scanning calorimetry (DSC), and energy dispersive X-ray (EDX). SEM analyses of the surface and cross-section of the tanned leather showed that fiber structures were not affected by ultrasound. It was also found that the shrinkage temperature of leather tanned with ultrasound was increased by about 5-29 °C. Chrome uptake and content were found to increase by 30-50% and 1-7%, respectively. Tanning time was shortened from 6 hours to 2 hours and the quantity of leachable chromium in ultrasound assisted chrome tanned leather was also decreased significantly. The noteworthy enhancing effects have been attributed largely because of the increased penetration of tanning agents into pickled leather. Photomicrographic analysis of the cross-section of the tanned leather also showed a higher penetration of tanning agents in presence of ultrasound.

## Introduction

Leather industry is one of the most ancient and potential industries in Bangladesh that supplies the necessary materials such as leather goods, shoes, and garments using by-products of the meat industry. But, leather processing generates huge number of by-products and wastes.<sup>1, 2</sup> It is reported that only about 20% of wet salted hides and skins are transformed into commercial leather generating a significant amount of chromium tanned leather waste (CTLW).<sup>3</sup>

The real problem, however, is that the leather industry presently faces many challenges due to environmental regulations. In Bangladesh,

there are about 165 leather industries, and 93% of them are located in the western part of the capital city Dhaka and others are located at different locations of the country.<sup>4-6</sup> In Bangladesh, 240 MT hides or skins are processed per day which generates 8.47 million liters of wastewater and 98 MT solid wastes.<sup>7</sup> Leather and Leather Goods (LLG) are the second-largest export product of Bangladesh just after the ready-made garments. Bangladesh aims a target to achieve a total of \$60 billion export earnings by 2021 of which \$5 billion is expected to be achieved from LLG.<sup>8</sup>

Tanning is the process of converting hides or skins into non-putrescible leather having certain physical, chemical and biological properties.<sup>9</sup> The common feature of hides/skins is that they are composed primarily of collagen and can be made from the skin of any vertebrate. In tanning, raw hides/skins are treated with inorganic and organic tanning agents such as chromium, aluminum, titanium, iron, and zirconium basic salts as well as high molecular weight vegetable substances, aldehydes, oils, and other substances.<sup>10, 11</sup> More than 85-90% of leather is processed by chrome tanning, and it has been used for over 100 years.<sup>12</sup>

Due to diffusion limitations, a significant amount of chromium remains in spent liquor during conventional chrome tanning processes.<sup>13</sup> This excess amount of chrome increases the suspended solids and dissolved solids of the wastewater resulting in an increase in environmental pollution and pollution load of existing water bodies.<sup>14</sup> Therefore, it is a crucial need to develop a process to speed up tanning without impairing the quality of finished products.

Ultrasound is one of the novel techniques for assisting the tanning process. Ultrasound is a sound wave with a frequency of 20 kHz-10 MHz that is generally used to enhance physical and chemical processes.<sup>15, 16</sup> The use of ultrasound over the last few decades has led to tremendous advances in the provision of versatile equipment for testing, detection, imaging, chemical processing and research.<sup>17</sup> Sonochemistry deals with the effects of sonic waves and wave properties on chemical systems. Sonochemical activity arises from acoustic cavitation in liquid media.<sup>18, 19</sup> Acoustic cavitation involves nucleation, growth and explosive collapse of microbubbles on a

\*Corresponding author email: zahangir@du.ac.bd

Manuscript received May 29, 2023, accepted for publication October 29, 2023.

microsecond timescale.<sup>20</sup> In the liquid phase high micro mixing will increase the heat and mass transfer and diffusion of species inside the pores of the solid.<sup>21</sup>

Several research groups reported the applications of ultrasound or the synergetic effect of cavitation and capillary action in leather processing such as soaking and liming,<sup>22,23</sup> degreasing,<sup>24,25</sup> chrome tanning,<sup>13,26-28</sup> vegetable tanning,<sup>29-33</sup> dyeing,<sup>34,35</sup> and fatliquoring.<sup>36-38</sup> Some researchers concluded that penetration and fixation of chrome tanning agents were separated due to cavitation effect.<sup>28</sup> During the research, it was observed that ultrasound assisted tanned leather showed higher uniform distribution of chromium throughout the samples than that of conventionally tanned leather. Moreover, the fiber structure of tanned leather was monitored with SEM. It was shown that the collagen fibers were intact upon tanning with ultrasound. Effects of various parameters such as tanning time, tanning agent dose, concentration of tanning agent were studied in detail. The thermal stability of the tanned leather in presence of ultrasound and without ultrasound was also reported. Thus, this study is aimed at developing an eco-friendly chrome tanning process using ultrasound.

## Experimental

### Materials

Raw materials used in chrome tanning were divided into two categories: primary raw materials and auxiliary raw materials. The primary raw materials were cow pickled pelt and basic chromium sulfate (basicity 33%). To operate the tanning process, different types of chemicals (laboratory reagent grade) were used besides the primary raw materials. The percentage of used chemicals was based

on the weight of the pickled pelt. The auxiliary chemicals were 150% pickling liquor, 1.5% sodium formate (HCOONa), 0.25% oxidized chitosan (OCS), 1.5% sodium bicarbonate (NaHCO<sub>3</sub>), 0.25% busan 30L. The percentage of all chemicals mentioned here are based on the weight of cow pickled pelt.

### Experimental set-up

Ultrasonic bath SONOREX DIGIPLUS DL 514 BH of BANDELIN electronic GmbH & Co. KG, GERMANY with a power generation of 860W and 35 kHz frequency was used in this study. Leather samples were taken in a glass beaker clamped inside the ultrasonic bath containing water. Conventional tanning was carried out using a drum in absence of ultrasound with provisions of controlling temperature and rotation per minute (rpm). In this study all experiments were carried out in triplicate and the presented results are their averages.

### Tanning procedure of cow pickled pelt

**Sample preparation:** The samples were cut into a size of 2 inch × 2 inch taking from the equivalent lateral position of the cow pickled pelt corresponding to the line of the backbone of the animal and weighed with an electronic balance (Shimadzu ATY224). The weights and areas of the samples used in this study were almost similar (4.0 g).

**Chrome tanning:** Chrome tanning was performed using ultrasound and conventional techniques. Details of the tanning process are described in Table I. All samples were divided into two parts for carrying out experiments with ultrasound and conventional methods. In the first group, the pickled pelt samples were taken in a beaker that was placed in a water bath to maintain the temperature exposed to ultrasound. Then, the pelts were chrome tanned with

**Table I**  
Details of chrome tanning operation

Sample	Tanning condition (For penetration)	Tanning condition (For basification)
1	6% basic chrome sulfate, 1.5% HCOONa and OCS for 1 hour	50% water, 0.25% busan and 1.5% NaHCO <sub>3</sub> for 1 hour
2	8% basic chrome sulfate, 1.5% HCOONa and OCS for 1 hour	50% water, 0.25% busan and 1.5% NaHCO <sub>3</sub> for 1 hour
3	10% basic chrome sulfate, 1.5% HCOONa and OCS for 1 hour	50% water, 0.25% busan and 1.5% NaHCO <sub>3</sub> for 1 hour
4	12% basic chrome sulfate, 1.5% HCOONa and OCS for 1 hour	50% water, 0.25% busan and 1.5% NaHCO <sub>3</sub> for 1 hour
5	6% basic chrome sulfate, 1.5% HCOONa and OCS for 1 hour	50% water, 0.25% busan and 1.5% NaHCO <sub>3</sub> for 2 hours
6	8% basic chrome sulfate, 1.5% HCOONa and OCS for 1 hour	50% water, 0.25% busan and 1.5% NaHCO <sub>3</sub> for 2 hours
7	10% basic chrome sulfate, 1.5% HCOONa and OCS for 1 hour	50% water, 0.25% busan and 1.5% NaHCO <sub>3</sub> for 2 hours
8	12% basic chrome sulfate, 1.5% HCOONa and OCS for 1 hour	50% water, 0.25% busan and 1.5% NaHCO <sub>3</sub> for 2 hours
9	6% basic chrome sulfate, 1.5% HCOONa and OCS for 2 hours	50% water, 0.25% busan and 1.5% NaHCO <sub>3</sub> for 4 hours
10	8% basic chrome sulfate, 1.5% HCOONa and OCS for 2 hours	50% water, 0.25% busan and 1.5% NaHCO <sub>3</sub> for 4 hours
11	10% basic chrome sulfate, 1.5% HCOONa and OCS for 2 hours	50% water, 0.25% busan and 1.5% NaHCO <sub>3</sub> for 4 hours
12	12% basic chrome sulfate, 1.5% HCOONa and OCS for 2 hours	50% water, 0.25% busan and 1.5% NaHCO <sub>3</sub> for 4 hours

6%, 8%, 10%, and 12% of basic chromium sulfate (BCS) for 2, 3, and 6 hours. At the beginning of tanning half of the basic chromium sulfate  $\text{Cr}(\text{OH})\text{SO}_4$  was added to the pickling liquor (150%) and the other half was added after 30 min and was sonicated. Then sodium formate (1.5% of sample) was added as a masking agent. The tanning bath was then basified using sodium bicarbonate which was divided into three equal portions and was added within an hour. A pH of 2.5 - 4.0 of the liquor was maintained while adding sodium bicarbonate.

The second part of the sample was tanned by conventional method where a stationary glass vessel and rotary drum were used instead of ultrasound. A hotplate stirrer was used to control the temperature. In chrome tanning an initial pH of 2.5 to 4.0 and the temperature of 30°-50°C was maintained.

Upon completion of tanning operations, the tanned leathers were covered by polythene and were piled up for several days to complete the fixation of tanning chemicals and were dried in air. Tanned leathers obtained in both ultrasound and conventional methods were then used for analysis and characterization.

#### Characterization of tanned leather

Tanned leathers were characterized with field emission scanning electron microscopy (JSM-7600F, JEOL, Japan), photomicrographic analysis (Nikon, K16976, Japan), thermogravimetric analysis (TGA-50, SHIMADZU, Japan), differential scanning calorimetry (NETZSCH STA 499 F3 Jupiter, Germany), energy dispersive x-ray spectrophotometry (JED-2300 Analysis Station Plus, JEOL, Japan), boiling test, and toxicity characteristic leaching procedure (TCLP) test.

#### UV-Visible spectrophotometry

The chromium content was determined by UV/visible spectrophotometry. The principle of this method is based on Lambert-Beer law, which shows that absorbance (A) is directly proportional to concentration for dilute solution. A SHIMADZU UV-1700 spectrophotometer at 540 nm wavelength was used for the analysis. Once the characteristic peak was determined, the subsequent testing and calibration of this sample were conducted on this spectrophotometer. The data obtained from UV spectrophotometers was used to characterize the kinetics of tanning and to calculate the percentage of chrome uptake.

% chromium uptake at time 't' was calculated using the following equation:

$$\% \text{Cr}_{\text{uptake}} = \frac{\text{Cr}_i - \text{Cr}_f}{\text{Cr}_i} \times 100$$

Where  $\text{Cr}_i$  is the initial concentration of chromium in the tanning liquor and  $\text{Cr}_f$  is the final concentration of chromium in the tanning liquor.

#### Boiling test

The boiling test was used to determine the percentage of shrinkage of the tanned leather. A piece of tanned leather (1 inch × 1 inch) was boiled at 100°C for 10 minutes. Then the distinction from the initial to the final surface area of the tanned leather was measured and the percentage of shrinkage was calculated by the following equation:

$$\% \text{Shrinkage} = \frac{(A_i - A_f)}{A_i} \times 100$$

where  $A_i$  and  $A_f$  are the initial and final area of the tanned leather after boiling.

#### Toxicity Characteristic Leaching Procedure (TCLP)

TCLP is commonly used to measure the quantity of leachable chromium in tanned leather. TCLP extraction solution was prepared by titrating 40 g citric acid in 400 mL of distilled water by 1 M NaOH. The pH was maintained to  $5.0 \pm 0.1$ . Air-dried chrome tanned leather powder (1 g) was added to 50 mL TCLP extraction solution. The mixture was turned at ambient temperature for 48 hours at a speed of 30 rpm. After 48 hours extraction, the reaction composition was filtered. In this experiment, UV-Vis Spectrophotometry was also used to determine the amount of leachable chromium from tanned leather.

## Results and Discussion

#### Effect of ultrasound on percent chromium uptake of leather

Chromium uptake was studied during the tanning process for different tanning conditions. In this study tanning was carried out using 6%, 8%, 10% and 12% basic chromium sulfate for 120 minutes. Cr uptake of leather tanned with ultrasound and conventional methods are shown in Figure 1. From this figure, it is evident that chromium uptake in the case of tanning with ultrasound was faster than tanning without ultrasound. Ultrasound improves the penetration of chromium through the pores of collagen fibers and hence enhances the percentage of chromium uptake by leather sample. Thus 87%, 98%, 91% and 90% chromium uptakes were obtained in the case of tanning with ultrasound for 120 minutes using 6%, 8%, 10% and 12% basic chromium sulfate, respectively while only 17%, 29%, 33% and 39% chromium uptake was observed in the case of conventional method under same tanning conditions.

The results showed that chromium uptakes of the leather samples tanned with ultrasound increased up to the concentration of basic chromium sulfate at 8% and then decreased. Because pickled pelts can't absorb all the chromium present in tanning liquor if excessive amount of tanning agent is used.<sup>39,40</sup> Thus, the use of 8% basic chromium sulfate for 2 hours is the best condition for ultrasound assisted chrome tanning to get maximum percentage of chromium uptake.

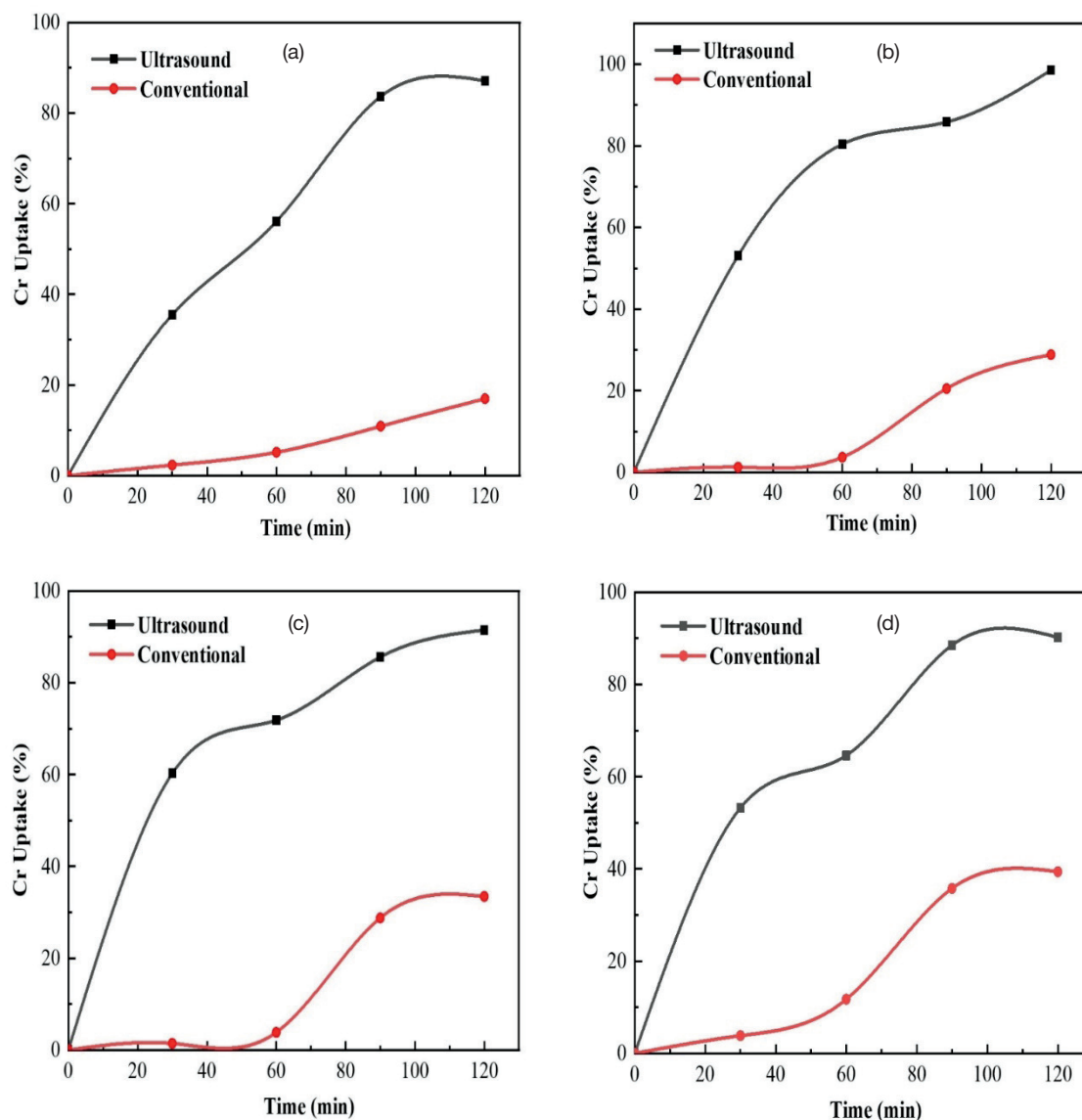


Figure 1. Cr uptake of leather (%) as a function of time (a) Sample 1, (b) Sample 2, (c) Sample 3, and (d) Sample 4

### Effect of time on chromium uptake

Cr uptake reached 98% when tanning was carried out with ultrasound for 180 minutes while only 33% Cr uptake was observed in the case of conventional method under the same conditions (Figure 2a). A further increase in tanning time proved to be detrimental for ultrasound process as was evidenced that 79% chromium uptake was observed with ultrasound for 360 minutes. However, it was increased to 63% with conventional process (Figure 2b). This reduction of Cr uptake might be due to desorption of some non-chemically bonded chromium ions by means of the effect of excessive sound waves which were generated in the sonicator.

### Chromium content in the tanned leather

Chromium content in tanned leather was determined by energy dispersive X-ray spectroscopic (EDX) method. From EDX spectra

of tanned leather, elemental composition of the leather was derived. Tanned leather contained several elements e.g., C, H, N, O, Cr, S, P, Na, Ca, Cl; but amount of H, Na, Ca, P were ignored in EDX analysis. EDX spectra of leather tanned in presence of ultrasound (a) and in absence of ultrasound (b) are shown in Figure 3. The spectra of other samples also exhibited similar trends. Cr-uptake of ultrasound assisted tanned leather with 8% BCS for 2h, 3h and 6 h were 6.16, 5.26 and 4.7 while those of the conventionally tanned leather were 0.82, 0.89 and 3.66, respectively.

Elemental analysis of chrome tanned leather with ultrasound and conventional method have been done. Chromium uptake of ultrasound assisted tanned leather was higher than that of conventionally tanned leather. The uptake of other elements also showed similar trends.

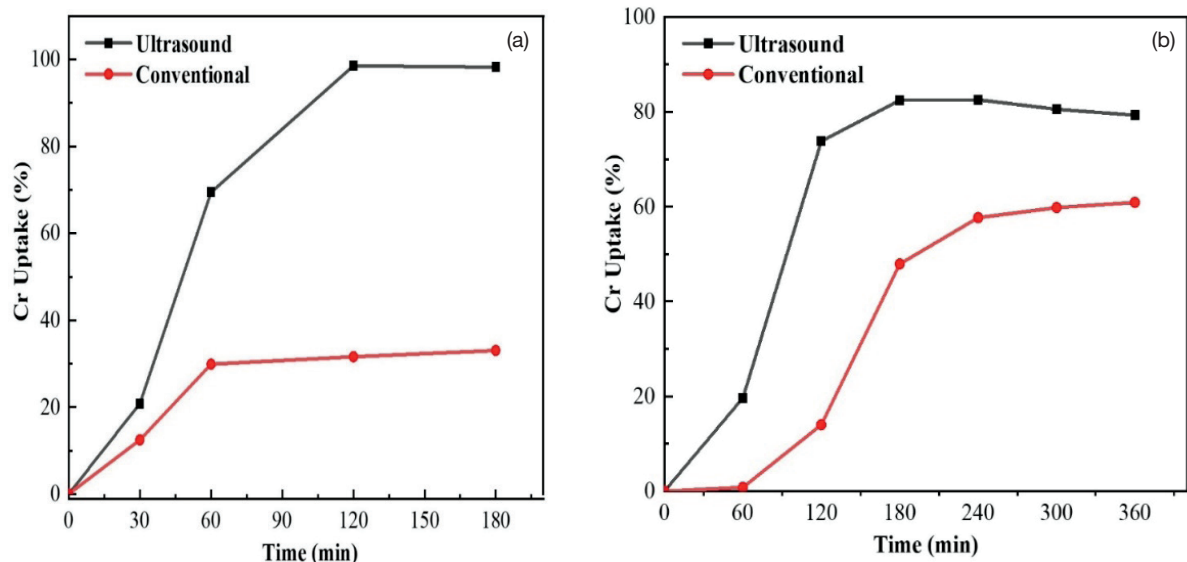


Figure 2. Cr uptake of leather (%) as a function of time (a) Sample 6 (b) Sample 10

### Thermogravimetric analysis of tanned leather

Thermal stability of leather tanned with and without ultrasound were compared to investigate the effect of ultrasound on leather tanning. Thermal degradation studies of tanned leathers were performed using thermogravimetric analyzer under  $N_2$  atmosphere.

Figures 4 (a) and (b) represent the thermograms of leathers tanned with 8% basic chromium sulfate for 2 hours using ultrasound and conventional methods, respectively. Temperatures required for 10%, 30%, 50%, 70% and 80% weight loss of leather tanned with ultrasound were 74°, 302°, 382°, 523° and 715°C, respectively while same weight loss occurred at 60°, 171°, 335°, 497° and 550°C for leather tanned with conventional method.

The temperature needed for a fixed percentage of weight loss was increased for leathers tanned using ultrasound technique. The improvement of the thermal stability of ultrasound assisted tanned leathers was due to higher penetration of basic chrome sulfate through the pores of leather leading to the formation of chromium-collagen complexes which acted as a barrier to the decomposition of leather.<sup>41</sup>

### Differential scanning calorimetric analysis of tanned leather

Differential scanning calorimetry (DSC) comes into prominence in recent years for evaluation of thermal behaviors (e.g., denaturation and shrinkage temperatures) of the raw skin, pickled, tanned, and finished leathers. Several important temperatures such as peak temperature, onset temperature, extrapolated onset temperature, and end set temperature can be determined from a typical DSC

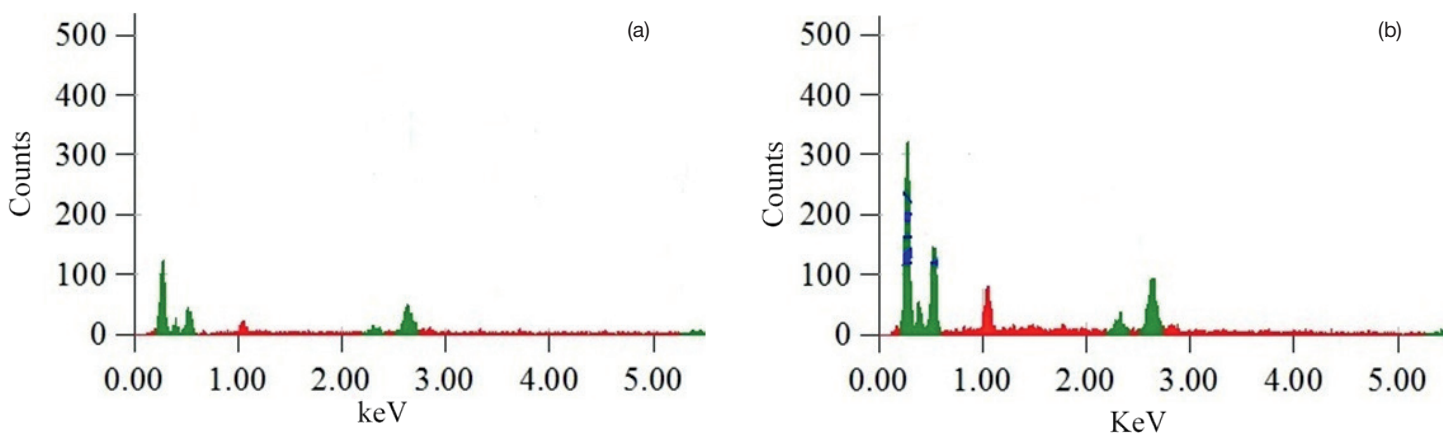


Figure 3. EDX spectra of leather tanned with ultrasound (a) and without ultrasound (b)

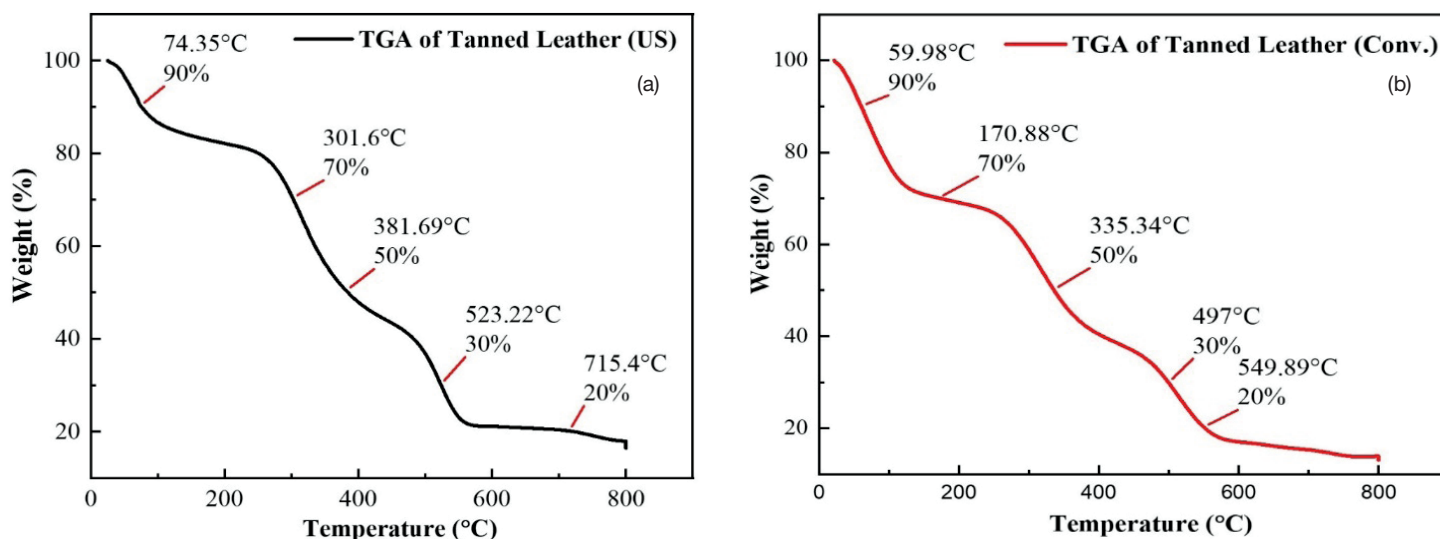


Figure 4. TGA thermograms of leather tanned with 8% of basic chromium sulfate for 2 hours (a) with ultrasound (b) conventional method

thermogram. In this study, the onset temperature was considered as the shrinkage temperature. The onset temperature is the temperature at which the slope of the thermogram first deviates from the baseline.

The DSC thermograms of the leather tanned with ultrasound and conventional method using 8% basic chromium sulfate for 2 hrs. is shown in Figure 5 (a, b). The thermograms of the leather showed that the shrinkage temperature of sample tanned in presence of ultrasound was 111°C while that of conventionally tanned leather was 82°C. The shrinkage temperature of sample treated under ultrasound was 29°C higher than that of conventionally tanned leather. The main reason for the improvement of shrinkage temperature is that a very small amount of chromium fixation happened within two hours in the conventional tanning method whereas most of the

chromium present in tanning liquor was fixed with collagen fiber in ultrasound-assisted tanning process. Therefore, the fixation of chromium increased with ultrasound.

#### Boiling test of tanned leather

The influence of ultrasound on tanned leather was also measured by evaluating the results of the boiling tests. In the present study, the percentage of area loss or area shrinkage was determined by the boiling test according to the ISO standard procedure (ISO 3380:2015).

Table II shows that the reduction in the area of the samples tanned with ultrasound were less than that of the samples tanned by the conventional method. Shrinkage areas of leather (Sample 2) tanned with ultrasound and conventional method are 31.25%

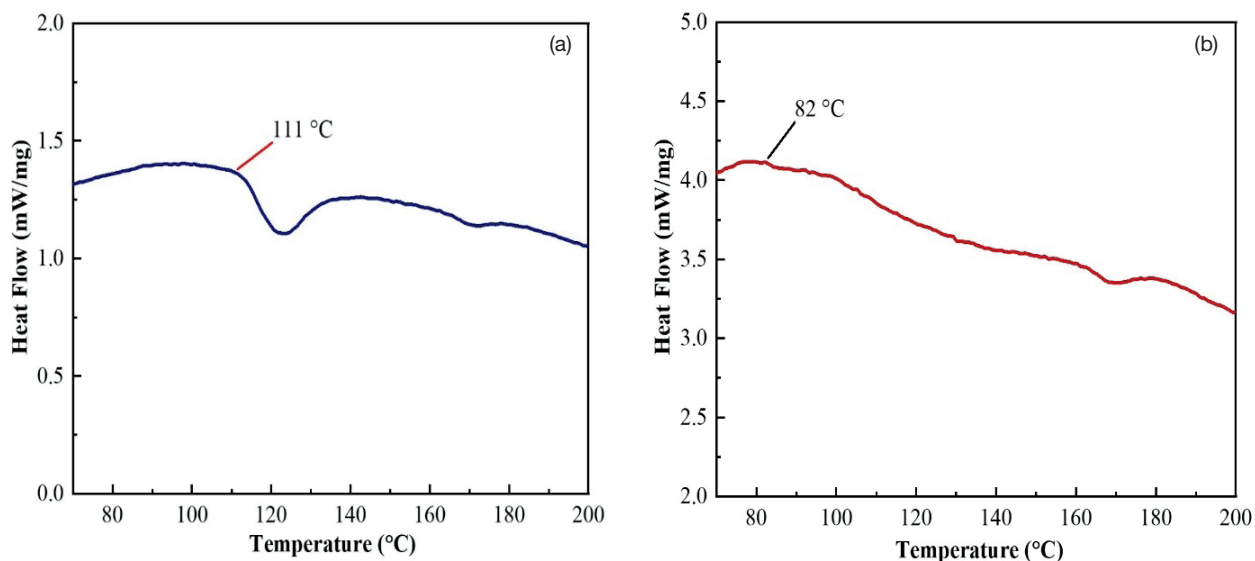


Figure 5. DSC thermograms of leather tanned (a) with ultrasound and (b) without ultrasound.

**Table II**  
Percentage of area loss of chrome tanned leather by boiling test

Sample No.	Experimental Technique	Initial area (cm <sup>2</sup> )	Final area (cm <sup>2</sup> )	Area loss (cm <sup>2</sup> )	Area loss or shrinkage (%)
1	With Ultrasound	4	2.90	1.10	27.50
	Conventional	4	2.64	1.36	34.00
2	With Ultrasound	4	2.75	1.25	31.25
	Conventional	4	2.20	1.80	45.00
3	With Ultrasound	4	2.54	1.46	36.50
	Conventional	4	2.15	1.85	46.25
4	With Ultrasound	4	2.58	1.42	35.50
	Conventional	4	2.14	1.86	46.50
5	With Ultrasound	4	2.88	1.12	28.00
	Conventional	4	2.63	1.37	34.25
6	With Ultrasound	4	2.72	1.28	32.00
	Conventional	4	2.21	1.79	44.75
7	With Ultrasound	4	2.64	1.36	34.00
	Conventional	4	2.10	1.90	47.50

and 45%, respectively. Conventionally tanned leather has a lower amount of fixed chromium and consequently, higher shrinkage occurred.

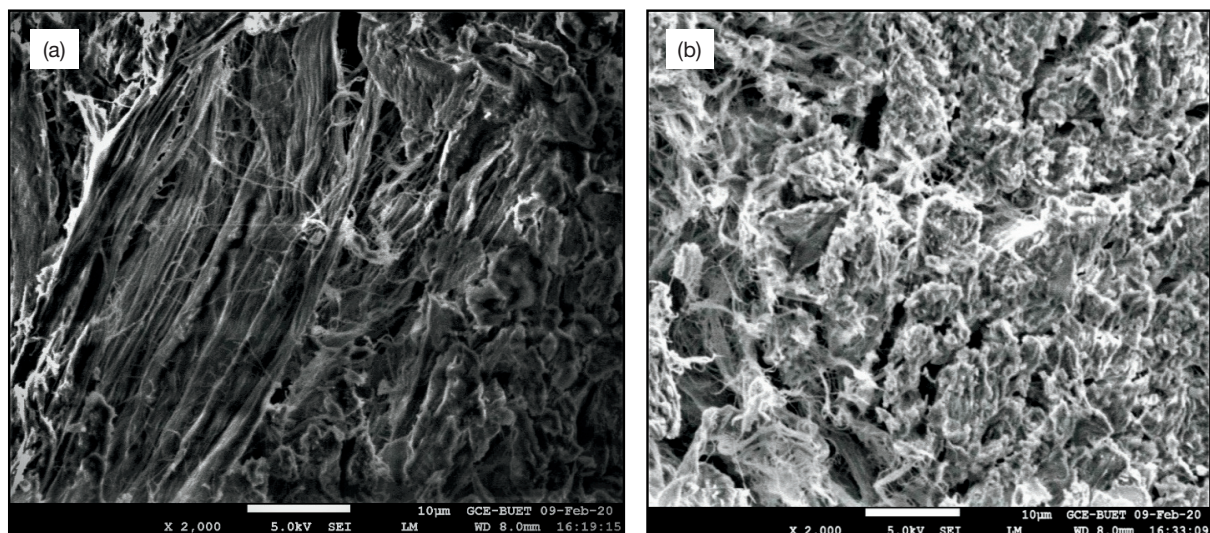
#### Field emission scanning electron microscopic (FESEM) analysis

The surface morphology of the wet-blue leathers produced by tanning under ultrasound and conventional techniques were observed by FESEM as shown in Figure 6.

The micrographs show the chromium penetration across the cross-sectional view of the tanned leather with 8% basic chromium sulfate for 2 hours using both ultrasound and conventional techniques. In

the micrographs, the darker region represents the concentration of chromium. It was observed that ultrasound assisted tanned leather showed a higher uniform distribution of chromium throughout the samples than that of conventionally tanned leather. Therefore, FESEM further confirmed that the tanning agent completely penetrates the full cross-section of leather in the process of ultrasound-assisted chrome tanning.

The fibril bundles of the tanned leather were also analyzed from FESEM micrographs which showed that the fibrils and fibril bundles of collagen in the flesh, corium, and grain layers of the chrome tanned leather and observed that the collagen fibrils are



**Figure 6.** FESEMs of the cross-sectional view of the tanned leather (a) with ultrasound and (b) without ultrasound at magnification  $\times 2000$

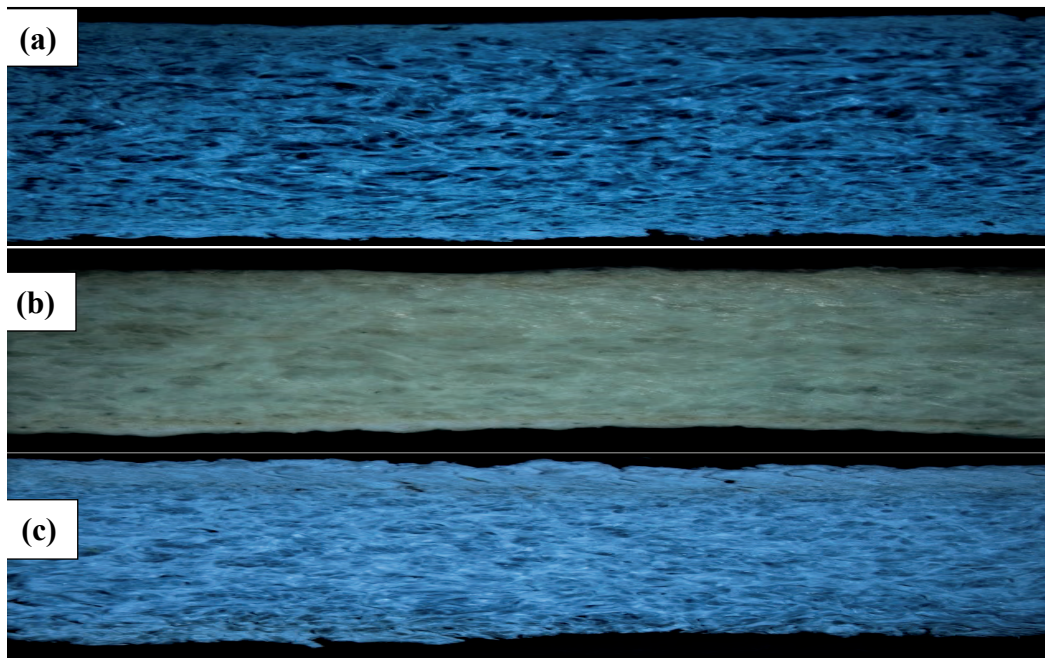


Figure 7. Microscopic images of the cross-section of (a) leather tanned with ultrasound, (b) pickled pelt and (c) leather tanned with conventional method.

intact for the leather tanned with both ultrasound and conventional techniques. These results revealed that collagen fiber structures were not damaged because of the usage of ultrasound in the tanning for 2 hours. But it was observed that in the case of the tanning process for 6 hours, the distance between fibrils is more with ultrasound than that of the conventional process. It means exposure to ultrasound for longer period is harmful for the structure of leather. Thus, in ultrasound-assisted chrome tanning process, 2-3 hours tanning time is optimum to complete the tanning operation.

#### Diffusion of tanning agent

Ultrasound enhances the penetration of the tanning agent and the degree of penetration was examined with a stereomicroscope. The cross-sectional images of the tanned leather obtained from the stereo microscope are shown in Figure 7. The depth of penetration of the tanning agent depends on the type of sample and the tanning agent used.

It was observed that the tanning agent distribution in the leather samples treated with ultrasound was about 30-70% higher than that of the conventional method. The principal reason behind this is the effect of acoustic cavitation which enhances the diffusion rate of tanning agents through the pores of collagen fibers.<sup>21</sup> Almost 98% penetration of tanning agent was observed for tanned leather after 2 hours of tanning with ultrasound whereas only 29% penetration was observed for that sample after 2 hours of tanning without ultrasound. Besides this, uniform distribution of tanning agents throughout the whole cross-section of the pelt, even the inner portion of the pelt is possible in the case of ultrasound-assisted chrome tanning, which

is quite impossible in the conventional tanning process. Hence, ultrasound can improve the penetration or diffusion of the tanning agent and impart better-quality leather.

#### Determination of leachable chromium content

All the absorbed chromium present in tanned leather is not chemically bonded to the collagen chains. The chemical bonding within the carboxyl groups of collagen fibers and chromium ion is supposed to happen. In this study, chromium physically attached to the fibers was extracted by the TCLP. It helps in determining the quantity of free chromium that can be leached out from the tanned leather to the environment when it is disposed. The leached chromium present in TCLP liquor was measured by UV-Vis spectrophotometric analysis (Table III).

These results indicated that the amounts of leachable chromium with ultrasound-assisted tanned leathers are lower than that of conventionally tanned leather. It is assumed that chemically bonded chromium in the tanned leather is not easily leached out.<sup>28</sup> Thus, higher hydrothermal stability for the tanned leather might be obtained for ultrasound assisted tanning.

#### Estimation of environmental benefits

Ultrasound may be applied to reduce the effluent load to the environment. Ultrasound can improve diffusion, penetration and fixation of chromium even at a lower concentration of tanning chemicals. As a consequence, Cr content in the spent liquor is reduced (Table IV) resulting a lower pollution load to the environment.

**Table III**  
Leachable chromium of tanned leather

Sample No.	Sample specification	Amount of leachable chromium (mg/gm)		Improvement (%)
		With ultrasound	Without ultrasound	
1	8% BCS, 2h	0.027	0.047	42.55
2	10% BCS, 2h	0.128	0.165	22.42
3	8% BCS, 3h	0.113	0.140	19.29
4	8% BCS, 6h	0.241	0.247	2.43

A significant reduction in the amount of unused chromium in the spent tanning liquor due to the use of ultrasound was observed. The reductions were 69%, 65%, and 16% for samples 1, 2, and 3 that were tanned with 8% BCS for 120 minutes, 180 minutes, and 360 minutes, respectively.

### Conclusion

Ultrasound showed significant effects on both penetration and basification of chromium ion through hide or skin by enhancing the tanning operation. Ultrasound decreased chrome tanning time from 6 hours to 2 hours. In presence of ultrasound, the percentage of Cr uptake was 70% for leather tanned with 8% basic chromium sulfate in 2 hours while it was only 35% for conventionally tanned leather. These results revealed that the use of 8% basic chromium sulfate and duration of 2 hours are the optimum conditions for ultrasound-assisted chrome tanning to get the maximum percentage of chromium uptake. The amount of unused chromium in spent liquor was also determined. A reduction of about 69% of unused chromium in the tanning effluent liquor was obtained by using ultrasound. EDX studies of tanned leather showed that chromium contents of ultrasound assisted tanned leather were about 7% higher than that of conventionally tanned leather. Thermal characterization of ultrasound assisted chrome tanned leather was carried out by DSC and TGA. The shrinkage temperature of ultrasound assisted leather was 5°-29°C higher than that of conventionally tanned leather. TGA analysis revealed that the thermal stability of ultrasound assisted tanned leather was better than that of conventionally tanned leather. Thus, it can be

concluded that application of ultrasound in leather processing might be a potential alternative to develop an eco-friendly leather manufacturing technique.

### Acknowledgements

The authors are thankful to Prof. Dr. Rakha Hari Sarker of the Department of Botany, University of Dhaka for his cooperation in microscopic observations of the tanned leather.

### Authors' contributions

Professor Dr. Md. Zahangir Alam, Professor Dr. Md. Nurnabi and Dr. Md. Abu Sayid Mia planned and designed the research. Dr. Md. Abu Sayid Mia and Shamima Yeasmin conducted the experiments and wrote the manuscript. Professor Dr. Md. Zahangir Alam and Professor Dr. Md. Nurnabi supervised the whole research and revised the manuscript.

### Funding

The Doctoral Fellowship from the Ministry of Science and Technology, Government of the People's Republic of Bangladesh (Reference No.: 39.00.0000.012.002.04.19-08, Fellowship No.: Physical Science-33) is gratefully acknowledged. Again, the financial support from Ministry of Education (Reference No.: 37.20.0000.004.033.020.2016-86, GARE Project No.: PS20191086) to carry out the research is highly acknowledged.

**Table IV**  
Amount of chromium present in the spent tanning liquor

Sample No.	Sample specification	Amount of chromium in the spent liquor (%)		Difference (%)
		Ultrasound	Conventional	
1	8% BCS, 2h	2	71	69
2	8% BCS, 3h	2	67	65
3	8% BCS, 6h	21	37	16

## Availability of data and materials

All data from this study are presented in the paper.

## Competing interests

The authors declare that they have no known competing financial interests or personal relationships that could have appeared to influence the work reported in this paper.

## References

- Bliss, S. Natural resources: Bangladesh leather. *Geography Bulletin*, **49**(3), 32-47, 2017.
- Ozgunay, H., Colak, S., Mutlu, M. M., & Akyuz, F. Characterization of Leather Industry Wastes. *Polish Journal of Environmental Studies*, **16**(6), 2007.
- Baldasso, C., and A. Dettmer. Hydrolysis of Chromium Tanned Leather Waste: Turning Waste into Valuable Materials. *JALCA* **113**(4), 2018.
- Iqbal, A., Hasan, M. H., Rasheduzzman, M., Paul, S. R., & Hamid, R. Environmental and Socio-economic Impact Assessment in Hazaribag Area of Dhaka for Tannery Relocation. *International Journal of Social Sciences and Economic Review*, **5**(1), 29-39, 2023.
- Islam, M. R., Islam, M. S., Akter, J., & Sultana, T. The Studies of Environmental Load and Consequences of Leather Industrial Effluents in Bangladesh. *Journal of Environmental Impact and Management Policy (JEIMP)* ISSN: 2799-113X, **3**(01), 1-14, 2023.
- Whitehead, P.G., Bussi, G., Peters, R., Hossain, M.A., Softley, L., Shawal, S., Jin, L., Rampley, C.P.N., Holdship, P., Hope, R. and Alabaster, G. Modelling heavy metals in the Buriganga River System, Dhaka, Bangladesh: Impacts of tannery pollution control. *Science of the Total Environment*, **697**, 134090, 2019.
- Hashem, A., Arefin, S. and Jor, A. Gaseous Air Pollutants and its Environmental Effect-Emitted from the Tanning Industry at Hazaribagh, Bangladesh. *Am J Eng Res*, **4**(5), 138-144, 2015.
- Export Promotion Bureau. *Bangladesh*, 2020.
- Sharphouse, J. H. Leather Technician's Handbook. *Leather Prod. Assoc. Northampt.*, 1971.
- Takenouchi, K. Composition of complexes in glucose-reduced chrome tanning liquors and their affinity to collagen. *JALCA* **75**(5), 150-166, 1980.
- Li, G., S. Fukunaga, and K. Takenouchi. Physicochemical Properties of Collagen Isolated from Calf Limed Splits. *JALCA* **98**(6), 224-229, 2003.
- Alam, M. N. E., M. A. S. Mia, F. Ahmad, and M. M. Rahman. An overview of chromium removal techniques from tannery effluent. *Appl. Water Sci.* **10**:1-22, 2020.
- Mengistie, E., Smets, I. and Gerven, T.V.; Ultrasound assisted chrome tanning: towards a clean leather production technology. *Ultrasonics Sonochem.* **32**, 204-212, 2016.
- Sivakumar, V., G. Swaminathan, P. G. Rao, and T. Ramasami. Influence of ultrasound on diffusion through skin/leather matrix. *Chem. Eng. Process. Process Intensif.* **47**:2076-2083, 2008.
- Ando, T., J. Ichihara, and T. Hanafusa. Ultrasonic acceleration of solid-liquid two-phase organic reactions. *Mem. Inst. Sci. Ind. Res., Osaka Univ* **42**:27-39, 1985.
- Suslick, K. S. Ultrasound: it's chemical, physical, biological effects (Homogeneous sonochemistry). *VCH Publ. Inc* 123-163, 1988.
- Contamine, F., F. Faïd, A. Wilhelm, J. Berlan, and H. Delmas. Chemical reactions under ultrasound: discrimination of chemical and physical effects. *Chem. Eng. Sci.* **49**:5865-5873, 1994.
- Bremner, D. Advances in Sonochemistry. *Ed. by Mason, T. J. New York JAI Press Ltd.* 1, 1991.
- Mason, T. J. Practical sonochemistry: A user's guide to applications in chemistry and chemical engineering. *Chichester, Engl. Ellis Horwood.* 1991.
- Suslick, K. S., and D. J. Casadonte. Heterogeneous sonocatalysis with nickel powder. *J. Am. Chem. Soc.* **109**:3459-3461, 1987.
- Senapati, N., and T. J. Mason. Advanced in Sonochemistry. *New York JAI Press Ltd.* **2**:88, 1991.
- Sivakumar, V. and Rao, P.G.; Power ultrasound assisted cleaner leather dyeing technique: influence of process parameters. *Environ. Sci. Technol.* **38**(5), 1616-1621, 2004.
- Sivakumar, V., Swaminathan, G. and Rao, P.G.; Use of ultrasound in soaking for improved efficiency. *J. Soc. Leather. Technol. Chem. Soc.* **88**(6), 249-251, 2004.
- Sivakumar, V., Chandrasekaran, F., Swaminathan, G. and Rao, P.G.; Towards cleaner degreasing method in industries: Ultrasound assisted aqueous degreasing process in leather making. *J. Clean. Prod.* **17**(1), 101-104, 2009.
- Herfeld, H.; About the use of ultrasonics in chemicals cleaning of leather and for the acceleration of wet processing in leather production. *Leder und Haute Markt* **30**, 232-237 & 271-274, 1978.
- Covington, D.; Tanning Chemistry: The Science of Leather. *Royal Society of Chemistry, Cambridge*, 2011.
- Sundar, V.J., Rao, J.R. and Muralidharan, C.; Cleaner chrome tanning-emerging options. *J. Clean. Prod.* **10**, 69-74, 2002.
- Zhang, J., Wang, Y., Teng, B., Chen, W.; New chrome tanning method assisted by wringing and ultrasound. *JALCA* **108**(12):445-8, 2013.
- Morera, J., Bartoli, E., Combalia, F., Castell, J. and Sorolla, S.; Study of the application of ultrasound in vegetable tannage. *JALCA* **105**(11), 369-375, 2010.
- Sivakumar, V., Jayapriya, J., Shriram, V., Srinandini, P. and Swaminathan, G.; Ultrasound Assisted Enhancement in Wattle bark (*Acacia Mollissima*) Vegetable tannin extraction for leather processing. *JALCA* **104**(11), 375-383, 2009.
- Sivakumar, V., Gopi, K., Harikrishnan, M.V., Senthilkumar, M., Swaminathan, G. and Rao, P.G.; Ultrasound assisted diffusion in vegetable tanning in leather processing. *JALCA* **103**(10), 330-337, 2008.
- Sivakumar, V., Verma, V.R., Rao, P.G. and Swaminathan, G.; Studies on the use of power ultrasound in solid-liquid

- myrobalan extraction process. *J. Clean. Prod.* **15**(18), 1815-1820, 2007.
33. Sivakumar, V., Anna, J.L., Vijayeeswaree, J. and Swaminathan, G.; Ultrasound assisted enhancement in natural dye extraction from Beetroot for industrial applications and natural dyeing of leather. *Ultrason. Sonochem.* **16**(6), 782-789, 2009.
34. Sivakumar, V., Verma, V.R., Swaminathan, G. and Rao, P.G.; Studies on the use of power ultrasound in solid-liquid myrobalan extraction process. *J. Sci. Ind. Res.* **66**(7), 545-549, 2007.
35. Xie, J.P., Ding, J.F., Mason, T.J. and Attenburrow, G.E.; Influence of power ultrasound on leather processing. Part I: Dyeing. *JALCA* **94**, 146-157, 1999.
36. Sivakumar, V., Swaminathan, G. and Rao, P.G.; Studies on the application of power ultrasound in fatliquoring process. *JALCA* **100**(5), 187-195, 2005.
37. Sivakumar, V., Prakash, R.P., Rao, P.G., Ramabrahmam, B.V. and Swaminathan, G.; Power ultrasound in fatliquor preparation based on vegetable oil for leather application. *J. Clean. Prod.* **16**(4), 549-553, 2008.
38. Xie, J.P., Ding, J.F., Mason, T.J. and Attenburrow, G.E.; Influence of power ultrasound on leather processing. Part II: fatliquoring. *JALCA* **95**, 85-91, 2000.
39. Alam, M. N. E., M. A. S. Mia, F. Ahmad, and M. M. Rahman. Adsorption of chromium (Cr) from tannery wastewater using low-cost spent tea leaves adsorbent. *Appl. Water Sci.* **8**:129, 2018.
40. Peng, B., Shi, B., Sun, D., Chen, Y., Shelly, D.C.; Ultrasonic effects on titanium tanning of leather. *Ultrasonics Sonochemistry* **14**(3): 305-313, 2007.
41. Jaikumar, D., B. Baskaran, and V. G. Vaidyanathan. Effect of chromium(III) gallate complex on stabilization of collagen. *Int. J. Biol. Macromol.* **96**:429-435, 2017.
-